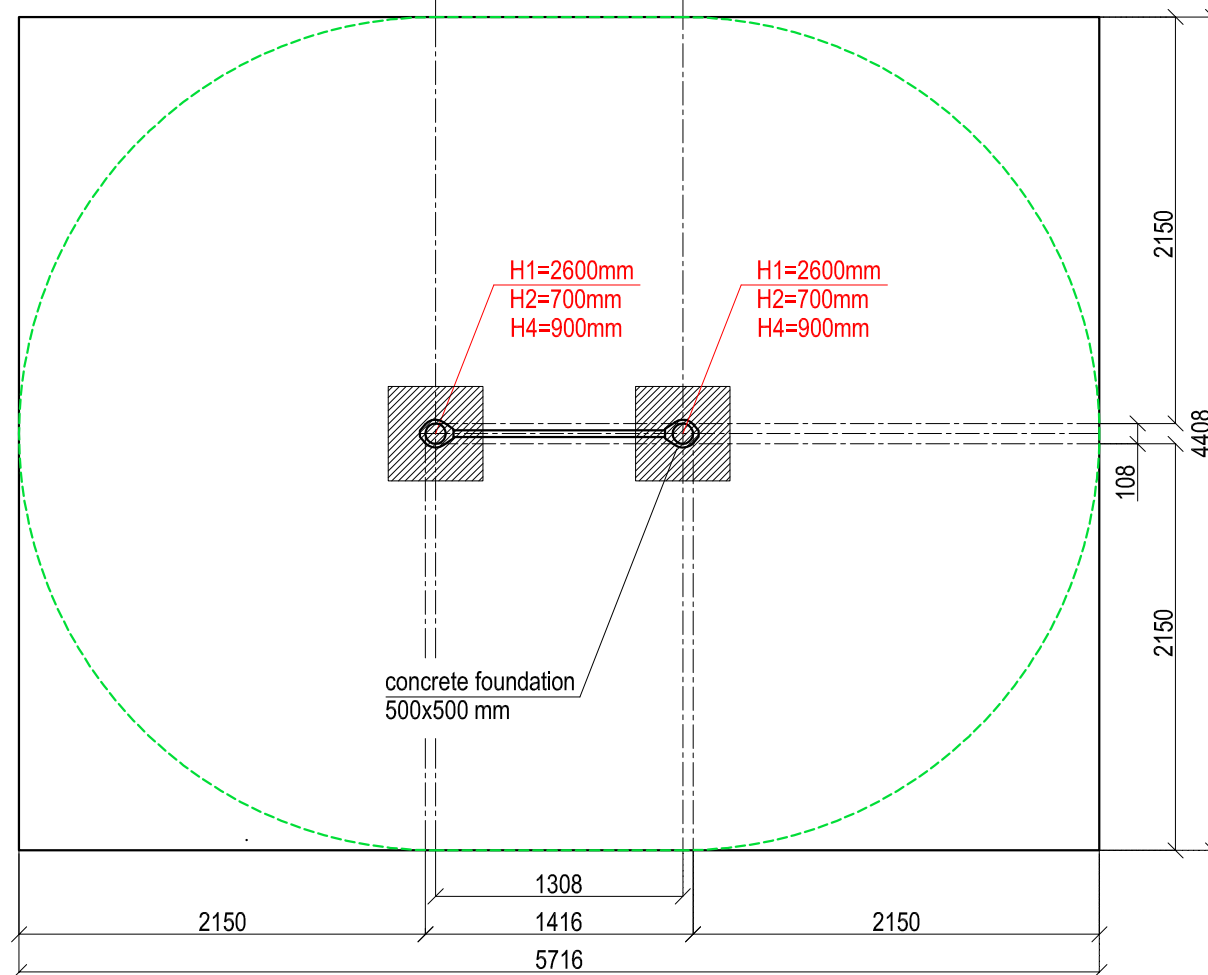
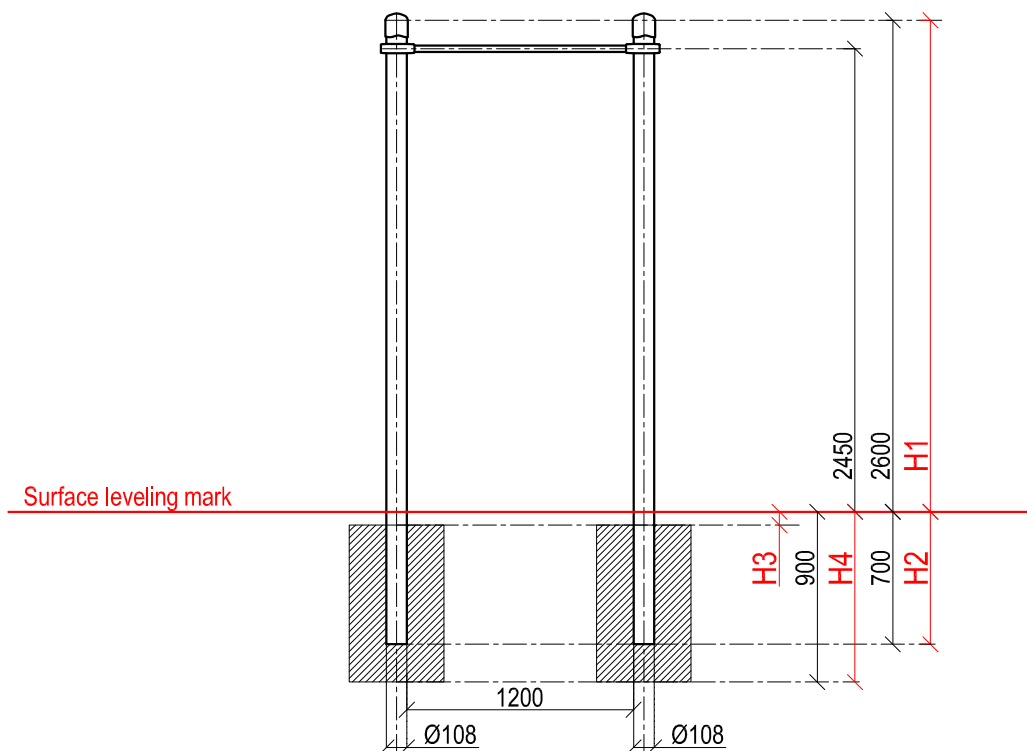
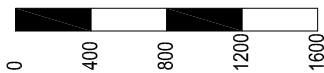


SCALE 1:40



LTD "KENGURU PRO"  
 Address: Lauteres street 4, Riga, Latvia, LV-1002  
 VAT Reg. No. 40103750152  
 Bank: A/S DNB bank, SWIFT: RIKOLV2X ,  
 Bank Account: LV65RIKO0002930161161  
 e-mail: info@kengurupro.eu  
 www.kengurupro.eu

K-007

Classic pull-up bars



The construction consists of two vertical columns and a horizontal crossbar with the length of 1200 mm (1758 mm optional length is possible). All elements of the construction are secured together with aluminium clamps at the height that corresponds to the wishes of the Client. Weight 69 kg

**Installation instructions:**

- Choose a suitable underground for the unit (see page 2, table 2)!
- Prepare the construction pit with a drilling machine or other devices.
- Before pouring the concrete all structures elements must be leveled and fixed.
- Complex elements must be fixed and bolted together with metal clamps.
- Ready-made C25 concrete should be used.
- Crossbars installation height can be changed according to customer's wishes.
- Approximately 0,15m<sup>3</sup> concrete is needed for each spot foundation.
- Under the structures we recommend to install absorbing rubber cover.

The size of the hole for the foundation is depending on the consistency of the ground. The dimensions mentioned above are applicable for normal conditions with firm ground. If the ground is extremely soft, a much bigger foundation is needed. Use only appropriate material and follow the installation instructions closely!!!

Foundation plan and area of movement of the K-007 Classic pull-up bars				Technical information		
Foundation when using Shock absorbing underground (syntethic – rubber granulates)		Beveling of foundation when using loose filling material		width:	108 mm	
				height:	2650 mm	
<b>H3</b>	<b>Drop height</b>	<b>H3</b>	<b>Drop height</b>	length:	1416 mm	
40 mm	> 1.2.....1.4 m	20 cm	< 1.0 m	largest part:	3350 mm	
50 mm	> 1.5.....1.7 m	30 cm	< 2.0 m	weight:	69 kg	
60 mm	> 1.8.....2.0 m	40 cm	< 3.0 m	floor space required:	4408 x 5716 mm	
70 mm	> 2.1.....2.5 m			pipe measurements:	diameter:	wall thickness:
					108 mm	3.2 mm
					33.7 mm	3.2 mm
				metal parts:	steel, galvanized, powder coated RAL 7016 (anthracite grey)	
				metal clamps:	aluminium, powder coated, RAL 2004 (pure orange)	
				bolts for metal clamps:	stainless steel, Pin Hex Button Head Security Screws M10	
				max. free fall height:	< 2450 mm	possible underground see DIN 79000:2012-05 Tab.2 or installation instructions
				user height:	> 140 cm	
				maximum user weight:	130 kg	
				certificates:	TÜV Rheinland InterCert Kft.	

